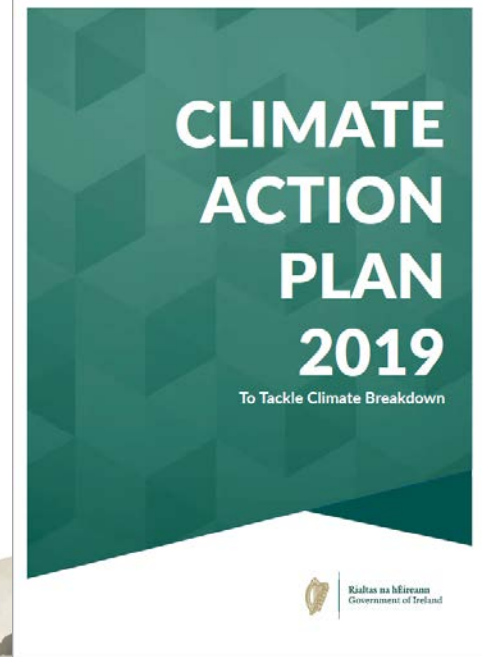
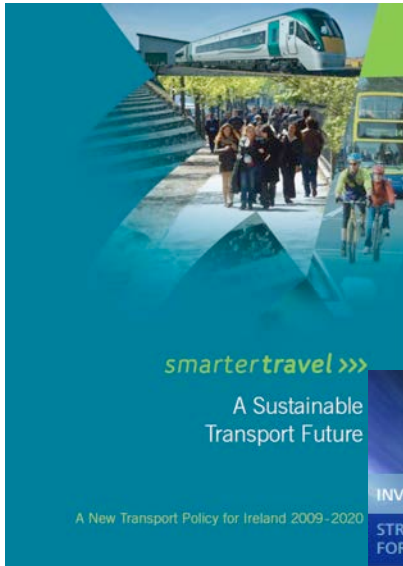


Integration of Land Use and Transport Planning



National Policy



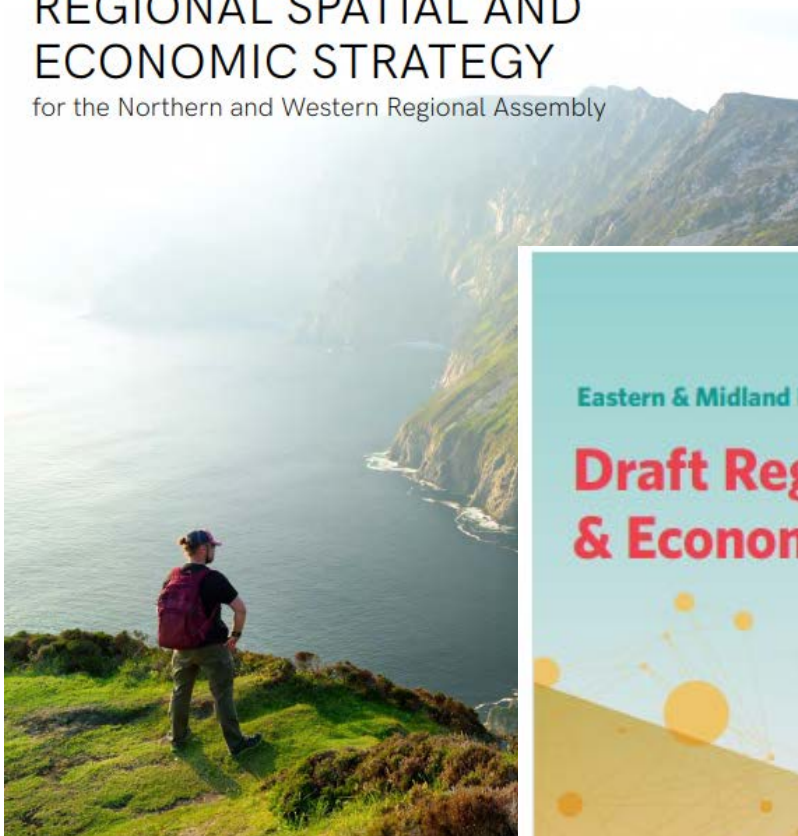
Project 2040



Regional Planning



Draft
**REGIONAL SPATIAL AND
ECONOMIC STRATEGY**
for the Northern and Western Regional Assembly



NTA: What we do

Bus, Rail & Light Rail Services



Taxi & Bus Licensing



Investment Projects



Integration & Technology



Transport Planning & Policy



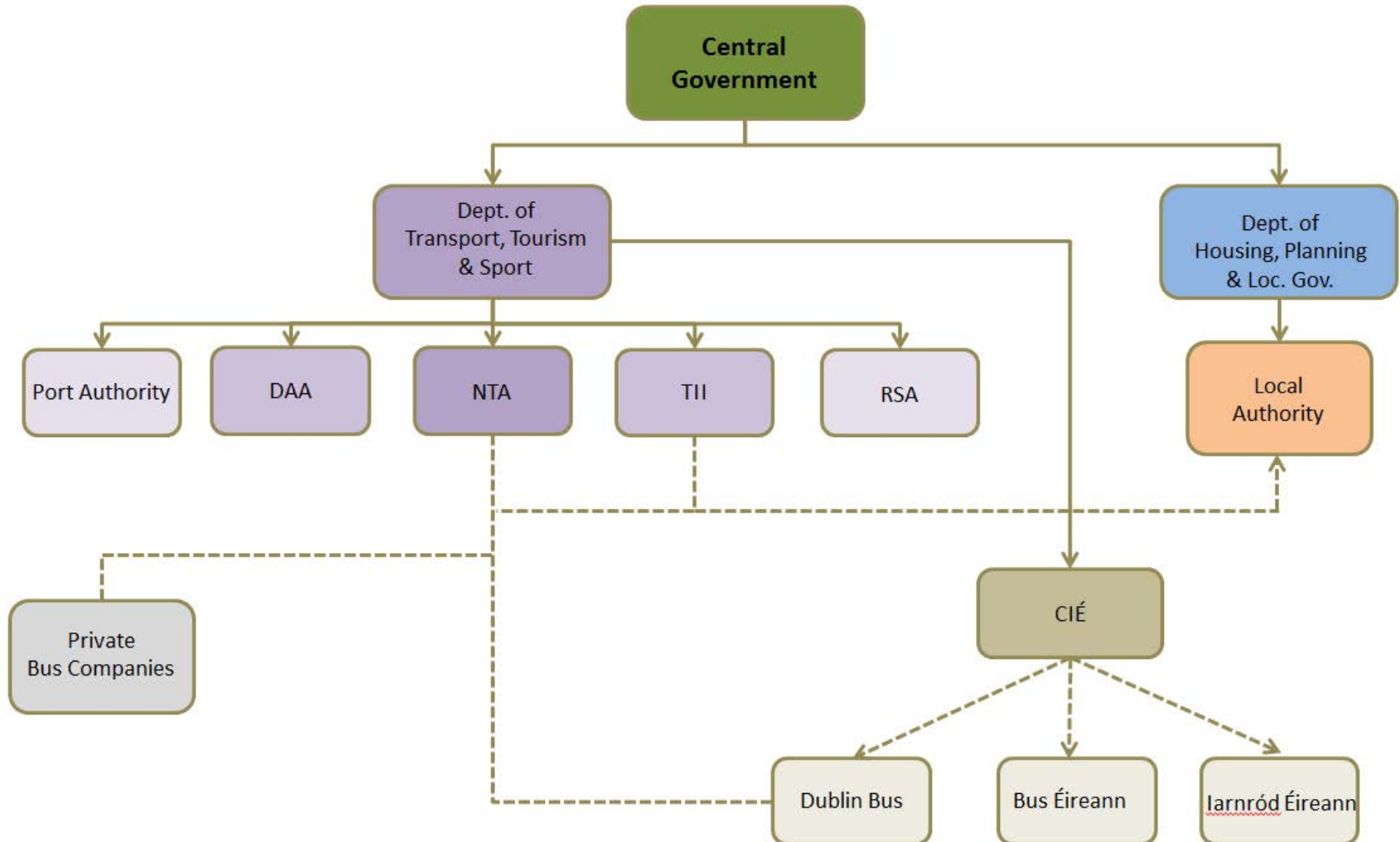
Personal Travel Choices



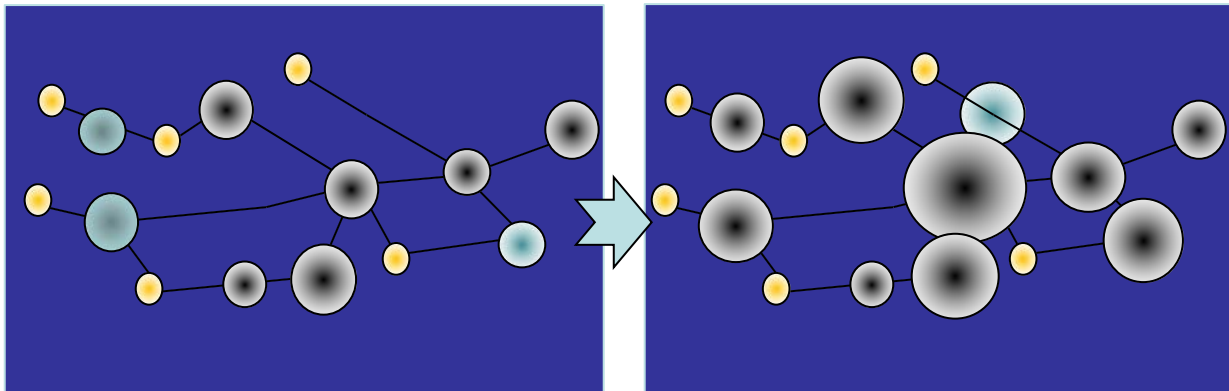
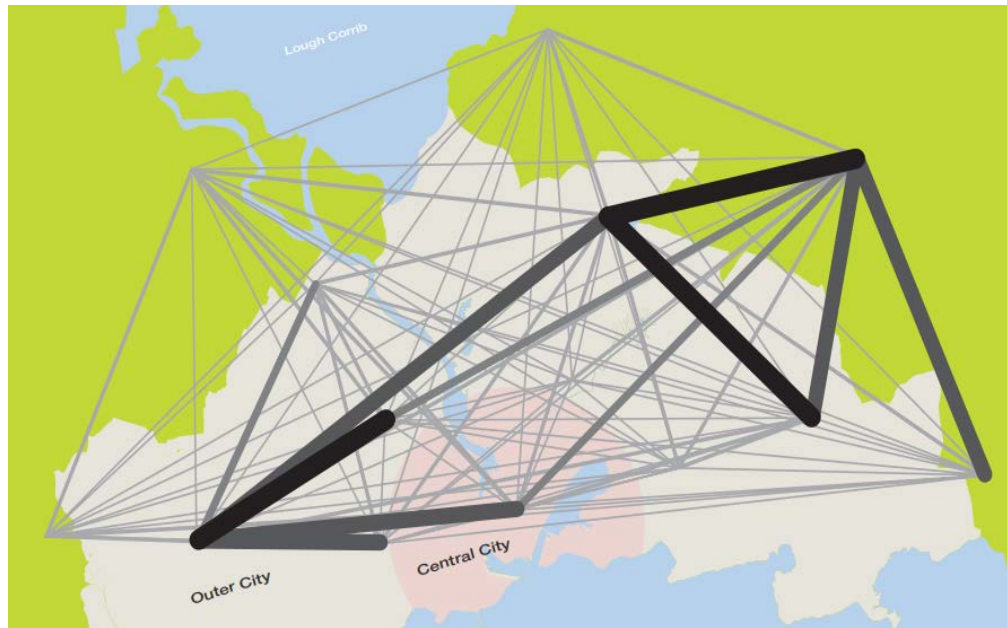
smartertravel >>>
>>> campus

smartertravel >>>
>>> workplaces

Governance of Transport in Ireland

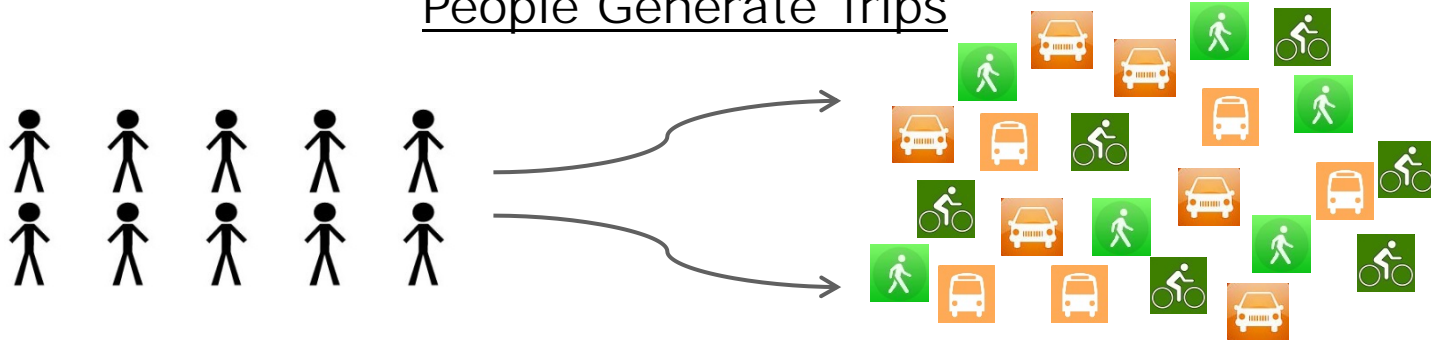


Travel Patterns



A Nation on the Move

People Generate Trips



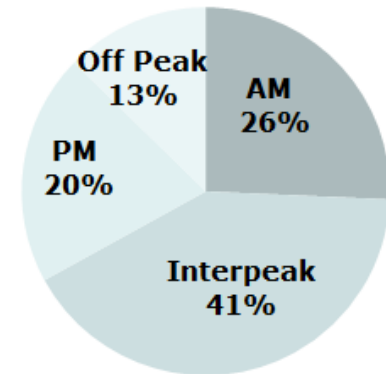
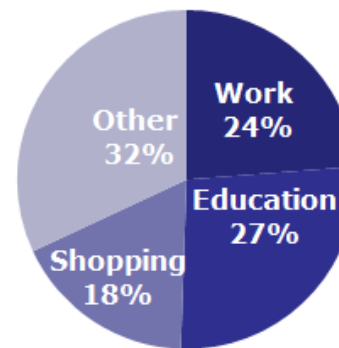
National Population 4.75 million (2016 Census)

15.2 million trips per day

Each person makes on average 3.2 trips per day



Trip Purposes & Time Periods



The role of Transport

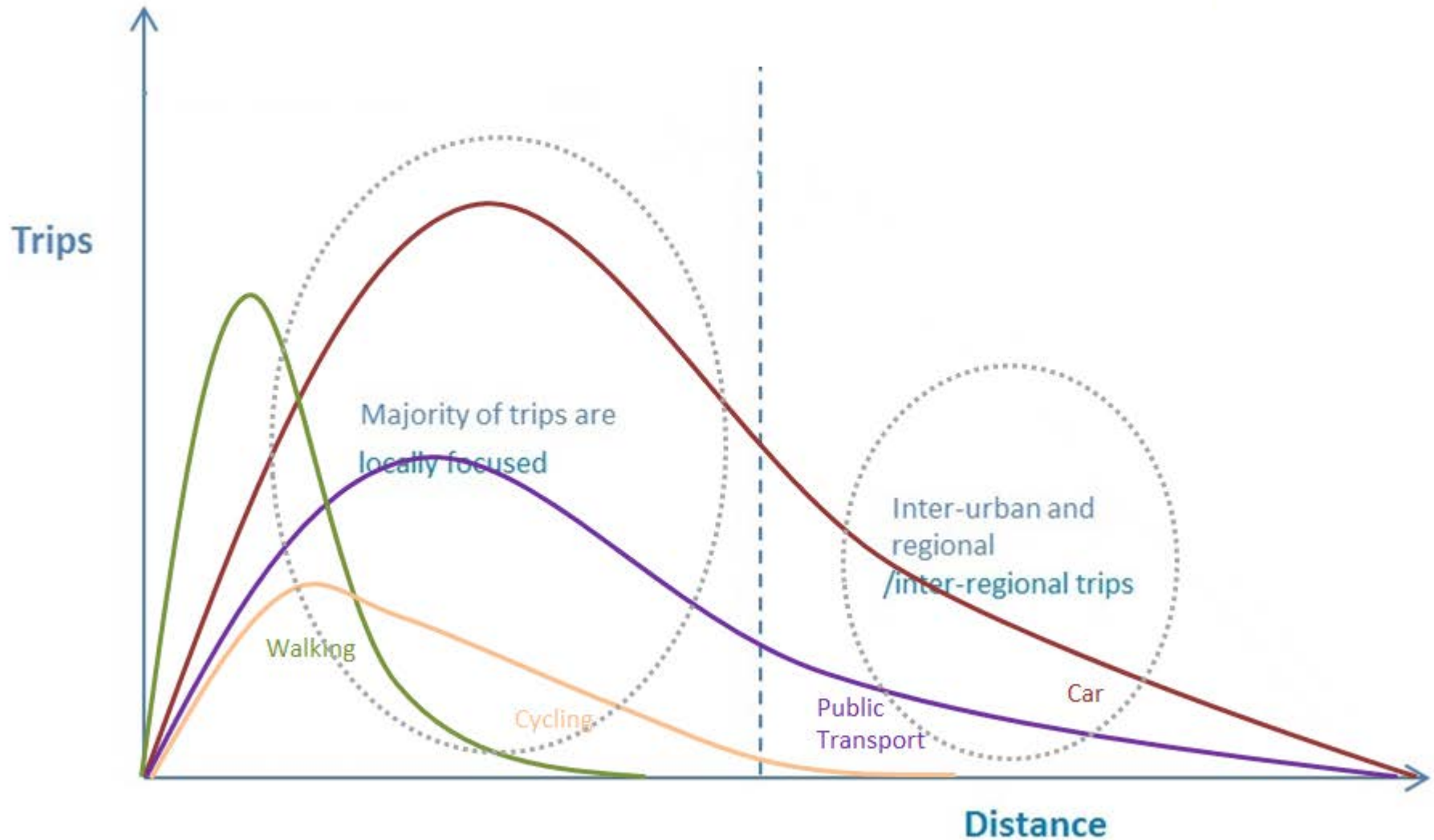
Economic and social activity is heavily based on transport connectivity.

A good transport network:

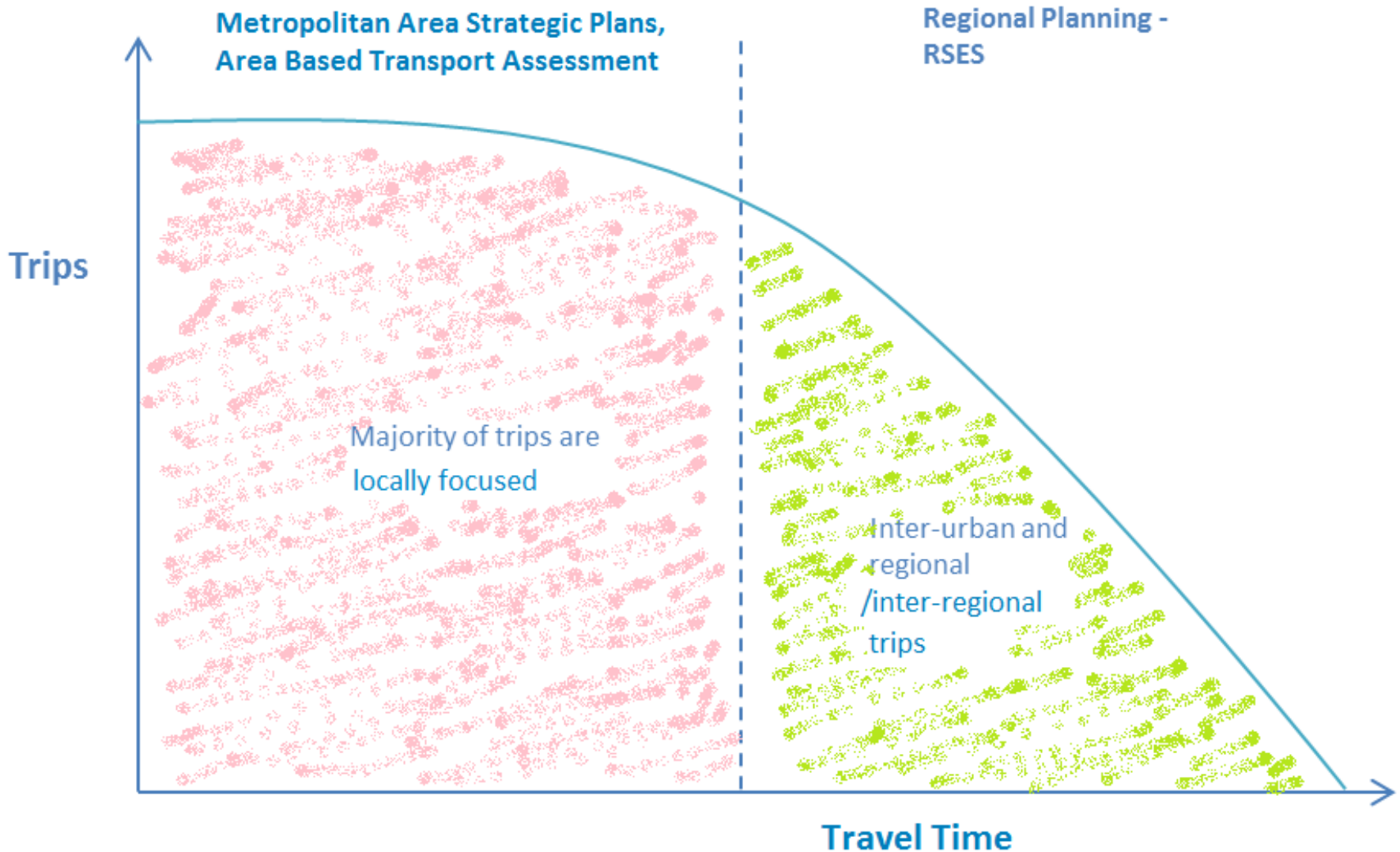
- Links people to jobs;
- Links people to services;
- Delivers products to markets;
- Underpins supply chains and logistics networks; and
- Facilitates domestic and international trade.



Policy Focus



Policy Focus



Get the balance right...



Complete Streets are for Everyone

How we are travelling...

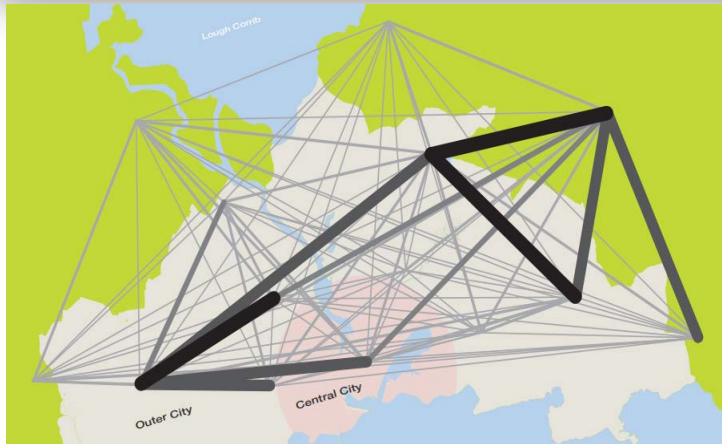
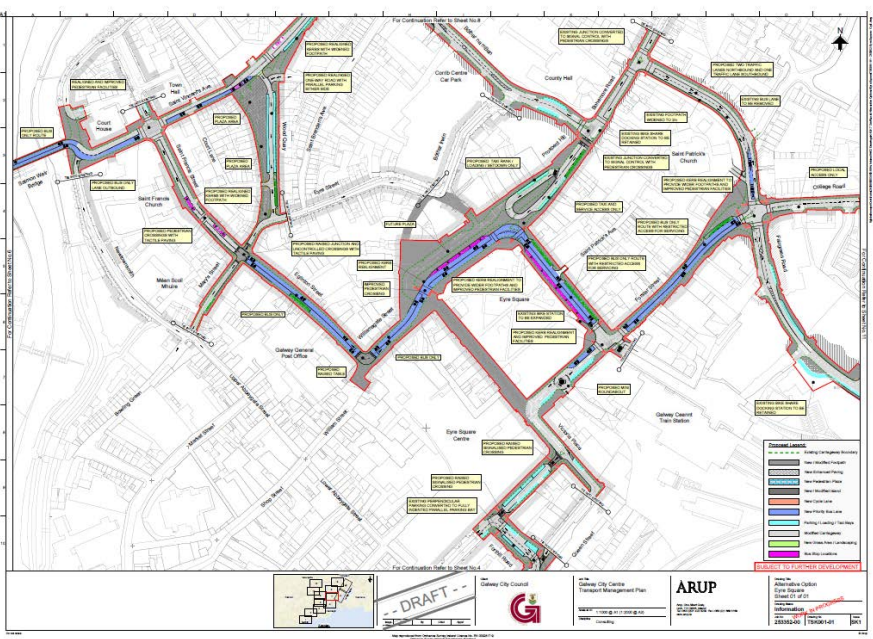
National

- Sustainable Mode Share 31% in 2011 and 2016
- Car Mode Share 69% in 2011 and 2016

Greater Dublin Area

- Sustainable Mode Share 42% in 2011 and 43% in 2016
- Car Mode Share 58% in 2011 and 57% in 2016

Developing an Integrated Approach to Transport Policy

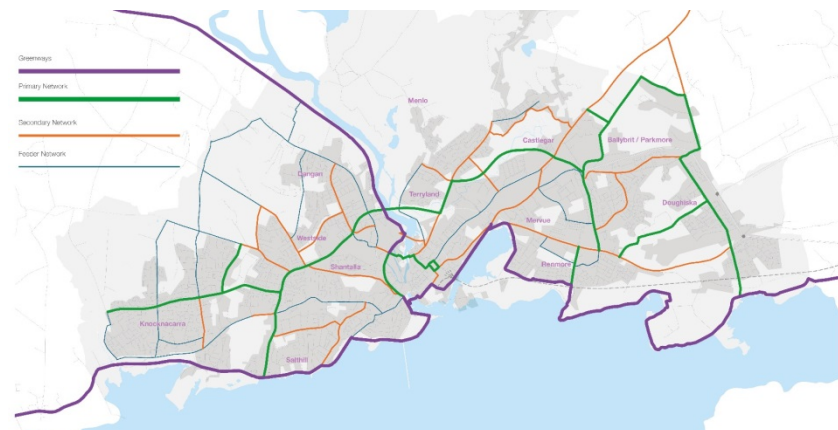
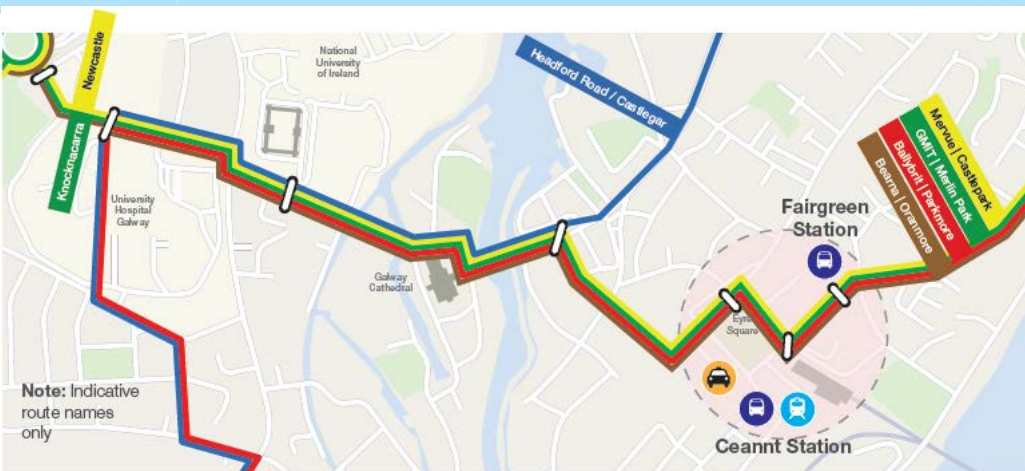
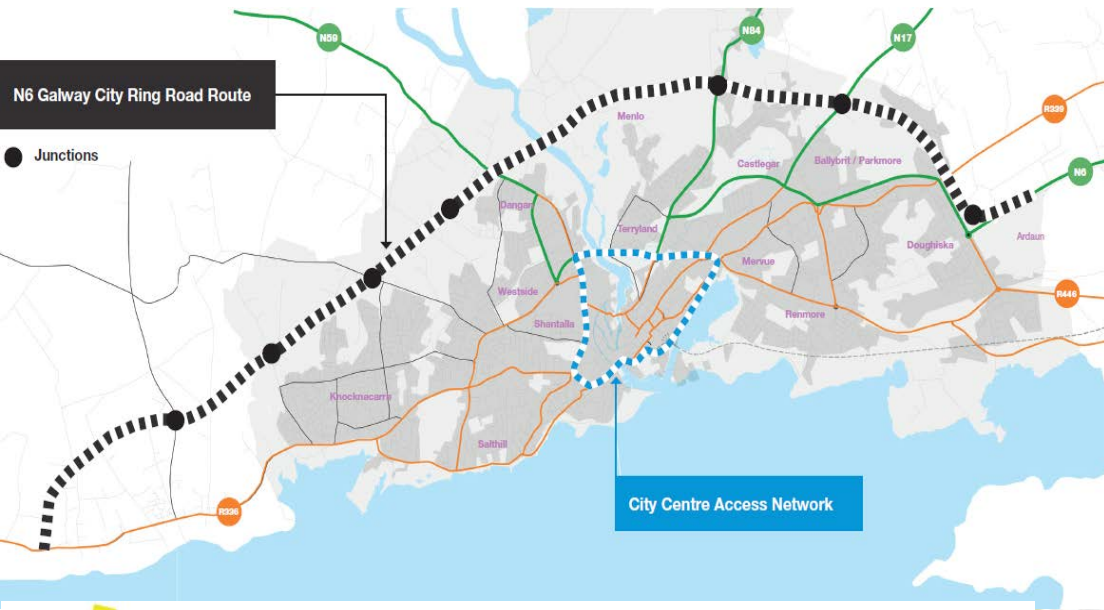


Regional and City Level Planning

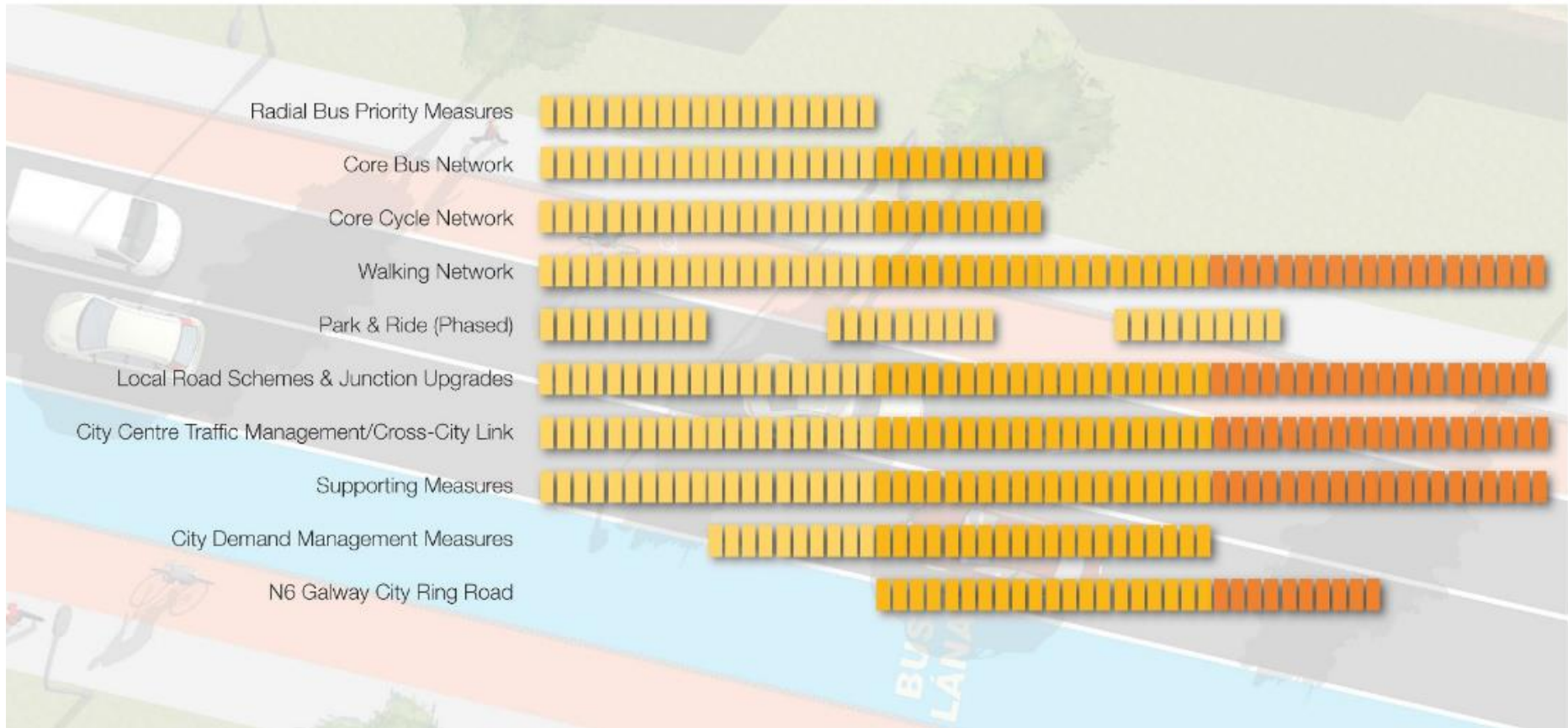
- Work in tandem with Regional Spatial and Economic Strategies (RSEs)
- Integrate Land Use Planning and Transport Investment
- Evidence-based Strategic Plans – Spatial Analysis and Multi Modal Transport Modelling
- Medium and long term horizons due to long lead in on major transport projects
- Provides a framework for investment
- **Work continues...**
 - ✓ GDA (review starts 2020)
 - ✓ Galway
 - ✓ Cork
 - ✓ Limerick (draft)
 - ✓ Waterford (initiated)



Galway Transport Strategy



Galway Transport Strategy

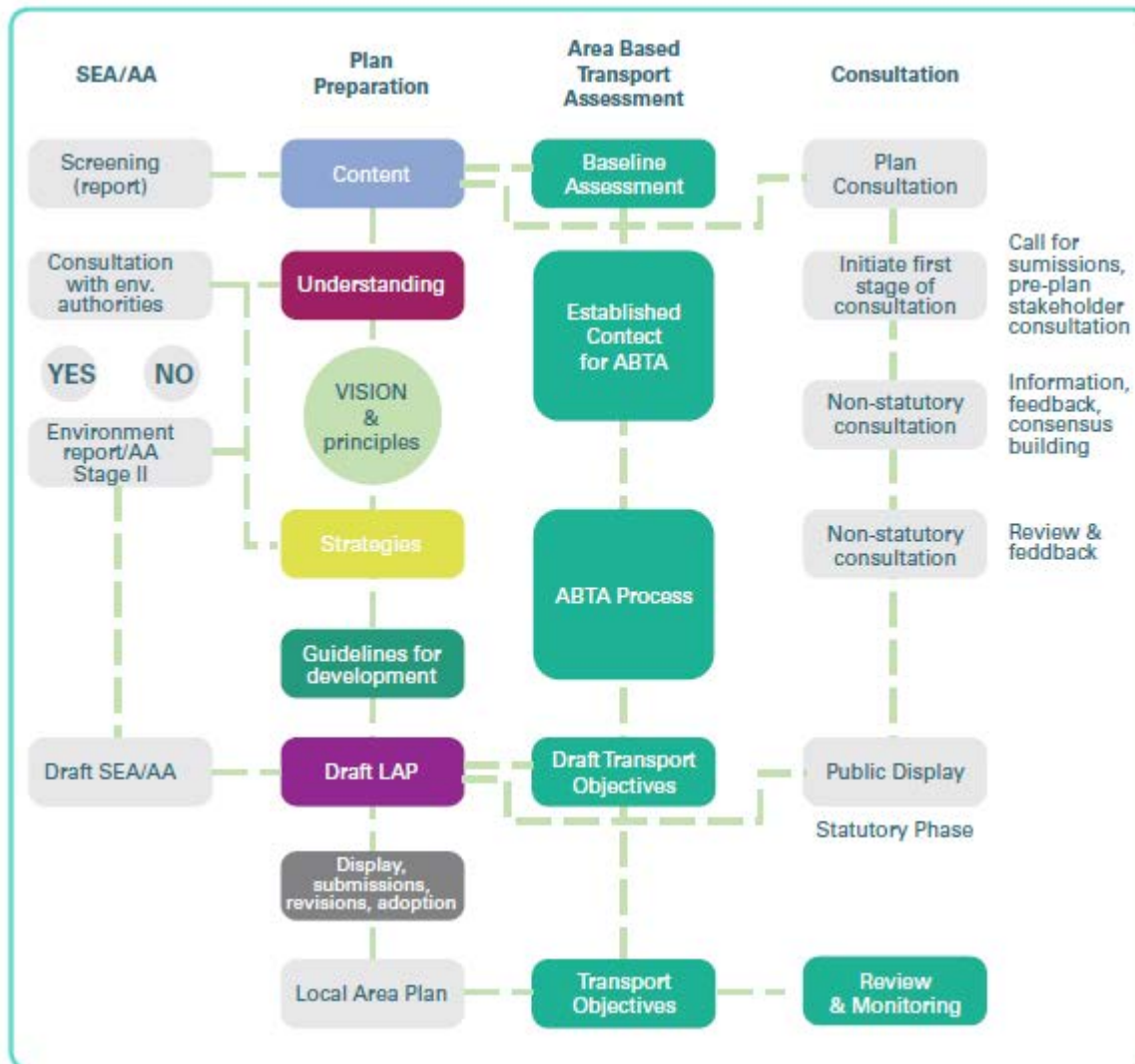


Local Transport Planning

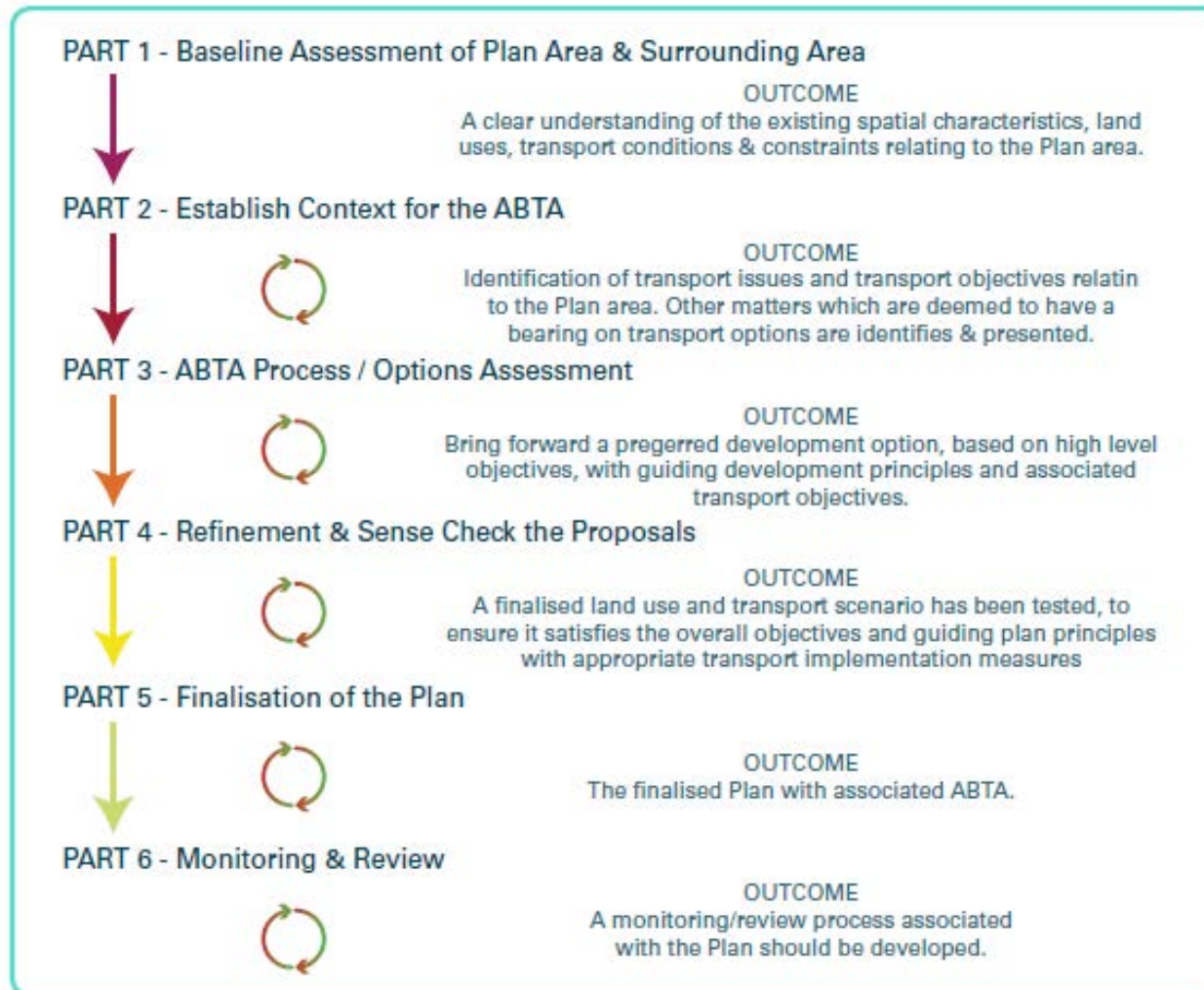
- Area Based Transport Assessment (ABTA)
Guidance developed by NTA and TII.
- Methodology to assess transport needs and potential solutions at a local level
 - LAPs
 - Masterplans / SDZs
 - Brownfield sites
 - Towns / Villages



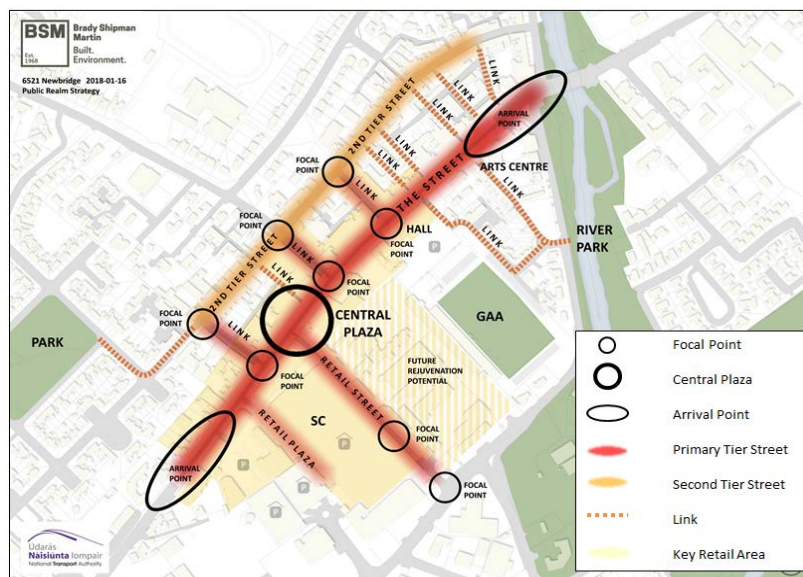
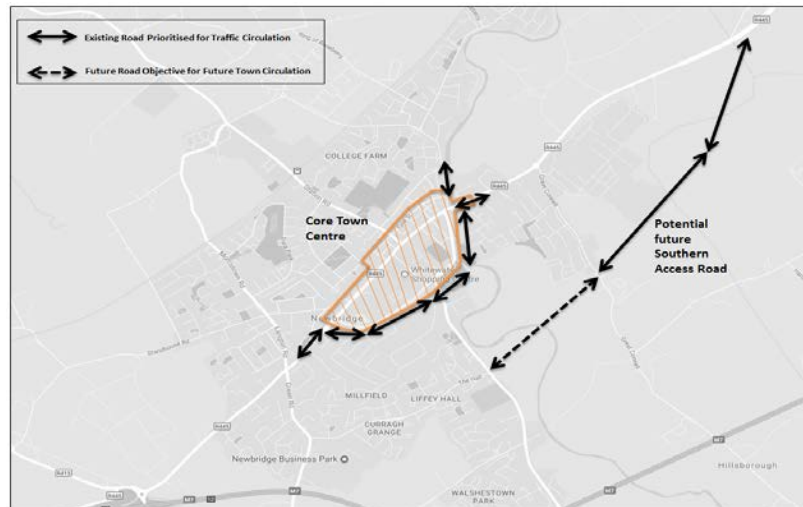
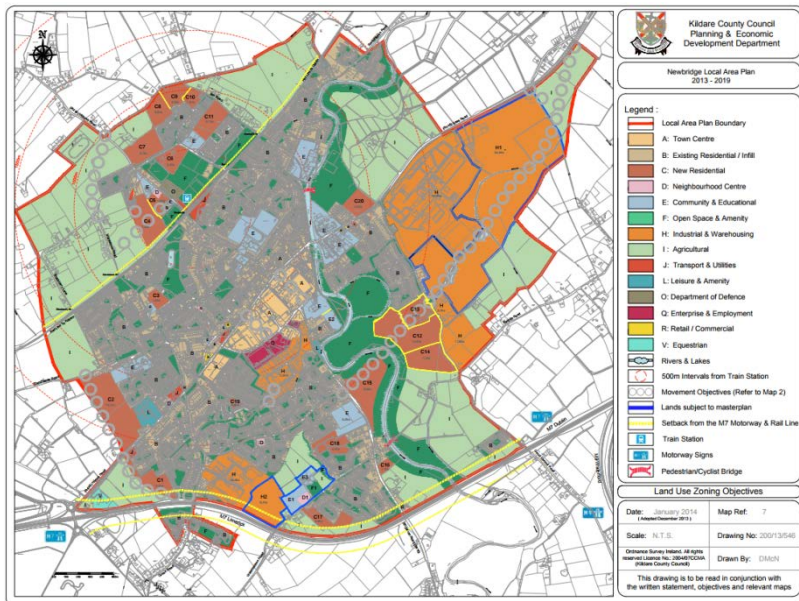
ABTA Approach



Implementing an ABTA



Implementing an ABTA



Covid 19

- Widening footpaths
- Pedestrianisation
- One-way systems
- Traffic signal times
- Additional temporary facilities for cyclists
- Use of car parking for additional external commercial space
- Additional cycle parking facilities
- Widening or protecting footpaths around schools



Demand Management

Sustainable Land use

Complimented by demand management

- Parking
- Fiscal Measures

Thank You

